

# Market Report

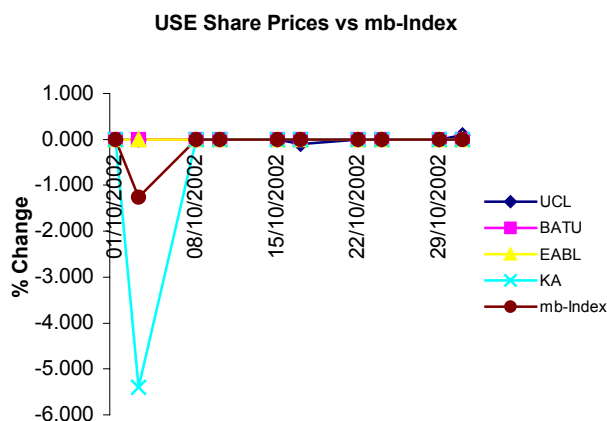
## October 2002



In UGX.	Par Value	Year End	Issued Shares	End month Price	Turnover ('000 UGX)	Market Cap. (UGX Bn)	EPS UGX	DPS UGX	DY%	P/E	NAV /Share	PBV
UCL	1000	Dec	500,000	5030	11,338	2.515	252.10	600.00	11.93	19.95	6437.74	0.78
BATU	1.25	Dec	49,080,000	1200	-	58.896	80.10	180.00	15.00	14.98	540.18	2.22
EABL	230	Jun	109,030,506	2010	-	219.151	489.21	264.50	13.16	4.11	2357.00	0.85
KA	105	Mar	461,615,484	175	450	80.783	43.24	13.80	7.89	4.05	381.80	0.48
<b>TOTAL</b>			<b>620,225,990</b>		<b>11,788</b>	<b>361.345</b>						
<b>TOTAL (excl. EABL &amp; KA)</b>						<b>61.411</b>						
PTA BOND Monthly Avg. Price		105.47										
Avg. Weighted Market P/E		4.67										
Market DY %		10.07										
Turnover Ratio (no. of shares)%		0.0007										
mb-Index		16,041.95										
1USD/UGX		1,834.00										

## EQUITY MARKET

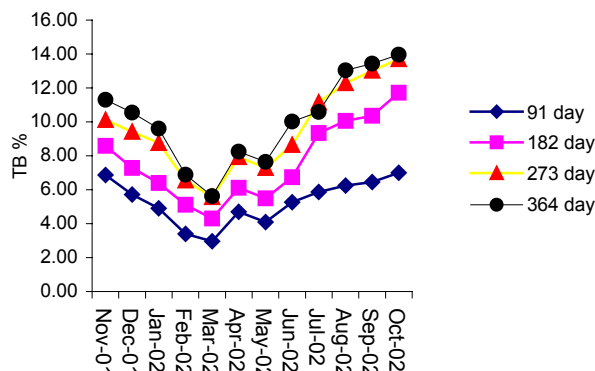
There were no trades on the BATU counter. An Interim Dividend of UGX 60 per share was paid out to shareholders on October 16<sup>th</sup>, 2002. There were no trades on the EABL counter. The shares were however trading cum-dividend the whole month through. A total of 2,750 KA shares were traded this month at UGX 175. Turnover for the month was UGX 449,750 and Market Capitalisation at the end of the month was UGX 80.782 billion. The shares traded ex-dividend the whole month through. 2,218 UCL shares were traded between UGX 5,025 and UGX 5,030 this month. Turnover for the month was UGX 11,154,895 and Market Capitalisation at the month end was UGX 2.517 billion. Total Turnover realised on the Uganda Securities Exchange for the month was UGX. 11.6 million.



## DEBT MARKET

All T-Bills dropped over the month. The 91-day T-bill at 4.94% in the 1<sup>st</sup> week rose 48 basis points through the month to 5.42% in the last week. The 182-day, 273-day and 364-day T-bills at 6.79%, 8.34% and 9.11% in the 1<sup>st</sup> week, all rose 27, 65 and 151 basis points in the 1<sup>st</sup> week to 7.06%, 8.99% and 10.62% respectively, and then dropped 60, 43 and 90 basis points to 6.46%, 8.56% and 9.72% in the last week.

**Avg. Monthly Treasury Bill rate:  
Nov 2001- Oct 2002**



## Contact:

Andrew Owiny: [a-owiny@mbea.net](mailto:a-owiny@mbea.net) or  
Anita Matovu-Analyst: [a-matovu@mbea.net](mailto:a-matovu@mbea.net)

**“Remember, Share prices may go up or down”**

\*\*\*\*\*  
Any recommendation in this Market Report may not be suitable for all investors, and the opinions expressed herein are subject to change without notice. We may from time to time have a long or short position in and buy or sell some of the securities referred to herein. The information and statistics in this Market Report are based upon sources we believe to be reliable, but have not been independently verified by this.  
The information, comments, and opinions, if any, are not intended to be, and should not be relied upon as complete.  
Pan Africa House, 4<sup>th</sup> Floor, 3 Kimathi Avenue, P.O. Box 24613, Kampala, Uganda  
Tel: +256 (0) 41 341448/231960 Fax: +256 (0) 41 342045 E-mail: [info@mbea.net](mailto:info@mbea.net) Web Site: [www.mbea.net](http://www.mbea.net)

**Graphs below-**

Company share prices compared with the mb-Index show over, under or par performance as against the mb-Index

