

Market Report

June 2003



In UGX.	Par Value	Year End	Issued Shares	End month Price	Turnover ('000 UGX)	Market Cap. (UGX Bn)	EPS UGX	DPS UGX	DY%	P/E	NAV /Share	PBV
UCL	1000	Dec	500,000	6220	8,361	3.110	1,260	600.00	9.79	4.87	10,870	0.56
BATU	1.25	Dec	49,080,000	1200	979	58.896	97.40	180.00	11.67	12.32	439.80	2.73
EABL	230	Jun	109,030,506	2010	-	219.151	489.21	264.50	13.16	4.11	2357.00	0.85
KA	105	Mar	461,615,484	140	-	64.626	43.24	13.80	9.86	3.24	381.80	0.37
BOBU	100	Dec	40,000,000	760	1,748	30.400	89.81	60.00	8.22	8.13	404.30	1.81
TOTAL			660,225,990		11,088	376.183						
TOTAL (excl. EABL & KA)						92.406						
PTA BOND Monthly Avg. Price		106.8945										
Avg. Weighted Market P/E		4.57										
Market DY %		11.96										
Turnover Ratio (no. of shares) %		0.0012										
mb-Index		13,554.98										
1USD/UGX		1998.23										

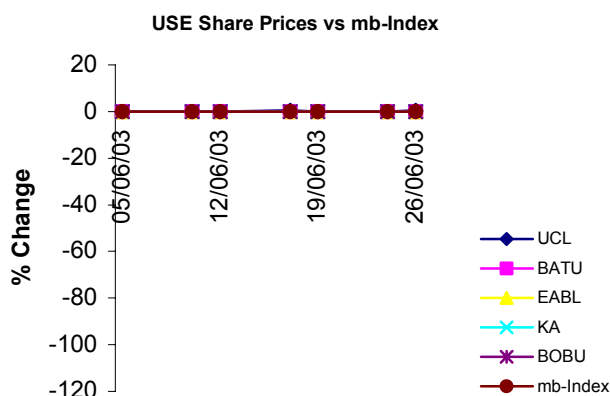
EQUITY MARKET

The UCL counter witnessed substantial trading this month with a total of 1,350 shares exchanging hands. End of month closing price appreciated to UGX.6,220 from UGX.6,160 as a result of increased demand over supply. BATU traded 815 shares at UGX.1,200 per share. The BOBU counter registered a total trade of 2300 shares at the flat price of UGX.760.

For yet another month no activities were reported on the KA and EABL counters.

Total turnover realised on the USE during the month was UGX.27,050,070.

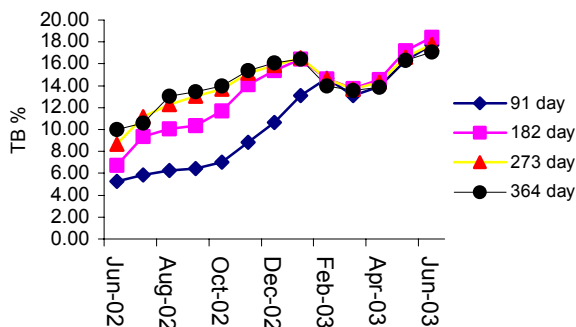
Share Prices remained relatively flat with the exception of UCL which appreciated by approximately 1%.



DEBT MARKET

All T-bills continued to show an upward trend this month. The 91-day, 182-day, 273-day and 364-day T-bills at 17.29%, 18.14%, 17.48% and 16.93% in the first fortnight all rose 81, 59, 53 and 24 basis points respectively to 18.10%, 18.73%, 18.01% and 17.17% in the second fortnight.

Avg. Monthly Treasury Bill rate: June 2002 - June 2003



Contact:

Davis Gathaara-
Anita Matovu-

d-gathaara@mbea.net or
a-matovu@mbea.net

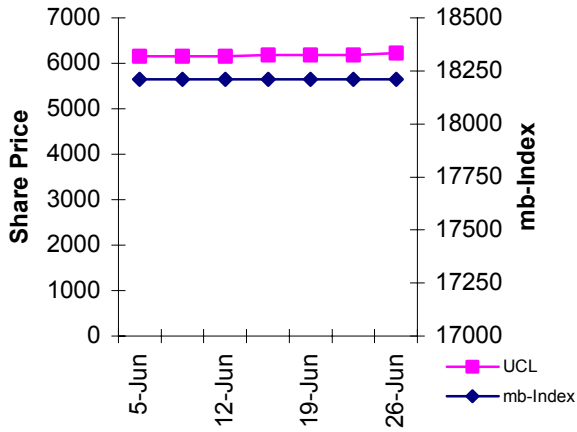
"Remember, Share Prices may go up or down"

Any recommendation in this Market Report may not be suitable for all investors, and the opinions expressed herein are subject to change without notice. We may from time to time have a long or short position in and buy or sell some of the securities referred to herein. The information and statistics in this Market Report are based upon sources we believe to be reliable, but have not been independently verified by this.
The information, comments, and opinions, if any, are not intended to be, and should not be relied upon as complete.
Pan Africa House, 4th Floor, 3 Kimathi Avenue, P.O. Box 24613, Kampala, Uganda
Tel: +256 (0) 41 341448/231960 Fax: +256 (0) 41 342045 E-mail: info@mbea.net Web Site: www.mbea.net

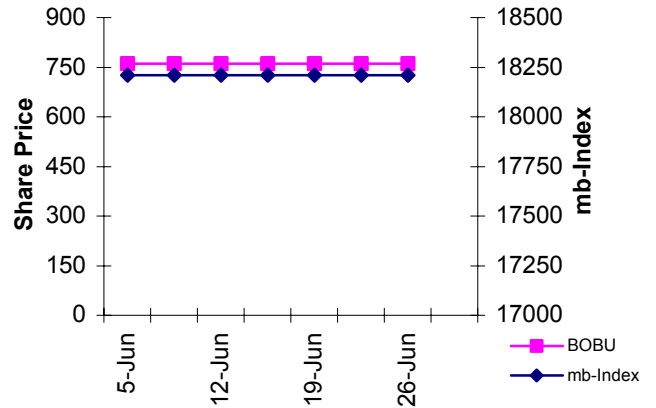
Graphs below-

Company share prices compared with the mb-Index show over, under or par performance as against the mb-Index.

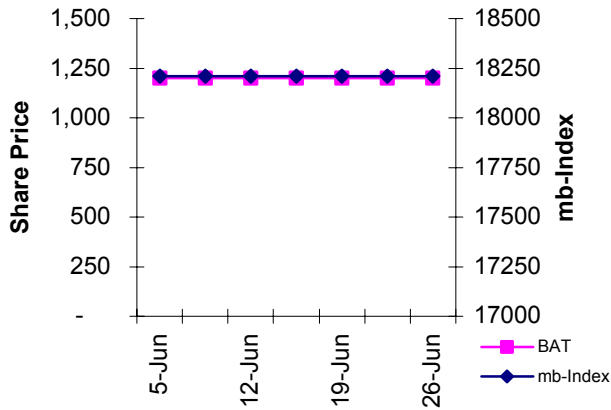
UCL Share Price vs mb-Index



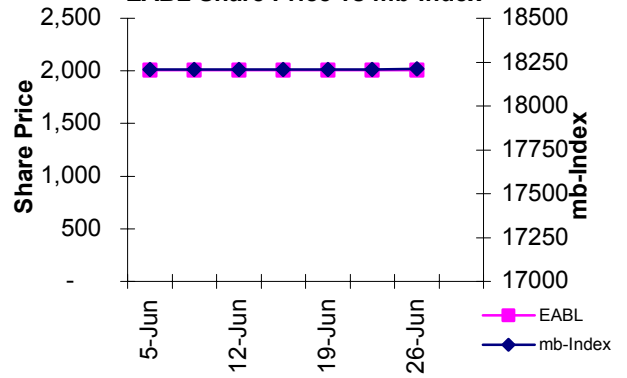
BOBU Share Price vs mb-Index



BATU Share Price vs mb-Index



EABL Share Price vs mb-Index



KA Share Price vs mb-Index

