

# Market Report

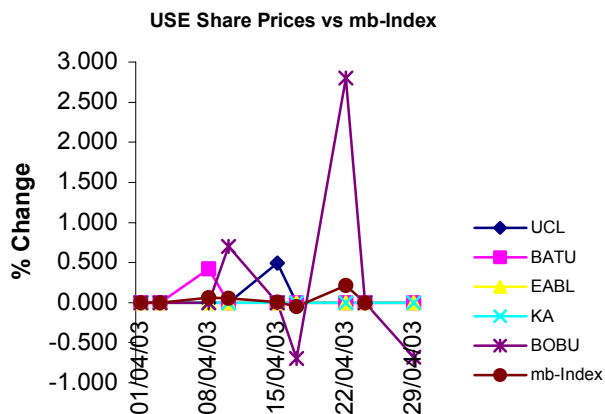
## April 2003



In UGX.	Par Value	Year End	Issued Shares	End month Price	Turnover ('000 UGX)	Market Cap. (UGX Bn)	EPS UGX	DPS UGX	DY%	P/E	NAV /Share	PBV
UCL	1000	Dec	500,000	6130	15,480	3.065	1,260	600.00	9.79	4.87	10,870	0.56
BATU	1.25	Dec	49,080,000	1200	12,144	58.896	97.40	180.00	11.67	12.32	439.80	2.73
EABL	230	Jun	109,030,506	2010	-	219.151	489.21	264.50	13.16	4.11	2357.00	0.85
KA	105	Mar	461,615,484	140	-	64.626	43.24	13.80	9.86	3.24	381.80	0.37
BOBU	100	Dec	40,000,000	730	12.084	29.200	89.81	60.00	8.22	8.13	404.30	1.81
<b>TOTAL</b>			<b>660,225,990</b>		<b>39,708</b>	<b>374.938</b>						
<b>TOTAL (excl. EABL &amp; KA)</b>						<b>91.161</b>						
PTA BOND Monthly Avg. Price		104.7221										
Avg. Weighted Market P/E		4.56										
Market DY %		12.00										
Turnover Ratio (no. of shares) %		0.0008										
mb-Index		13,523.39										
1USD/UGX		1971.47										

### EQUITY MARKET

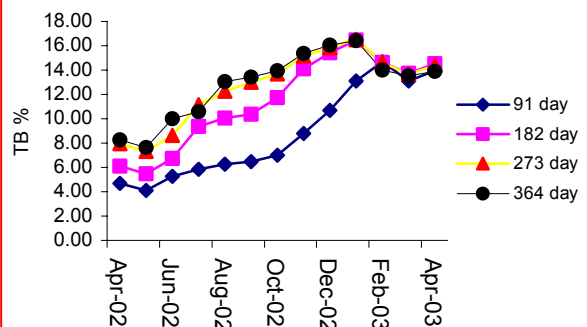
A total of 2529 UCL shares were traded this month. Turnover amounted to UGX 15,479,250 and the Market Capitalisation at the month end was UGX 3.065 billion. On the BATU counter the Total number of shares traded was 10,120. Turnover was UGX 12,144,000. Market Capitalisation at the month end stayed at UGX 64.626 billion. The BOBU counter registered an improved monthly closing price of UGX 730. A total of 17,300 shares were traded and turnover for the month was UGX 12,443,500. No activities were reported on the KA and EABL counters. Bank of Baroda Uganda also declared a final dividend of UGX 60 per share.



### DEBT MARKET

All T-bills rose this month. The 91-day, 182-day, 273-day and 364-day T-bills at 12.72%, 13.43%, 13.50% and 13.41% in the first fortnight all rose 105, 77, 50 and 1 basis points respectively to 13.77%, 14.20%, 14.00% and 13.42% in the second fortnight and 153, 180, 155 and 136 basis points in the third fortnight to 15.30%, 16.00%, 15.55% and 14.78%.

Avg. Monthly Treasury Bill rate: April 2002- April 2003



#### Contact:

Davis Gathaara-  
Anita Matovu-

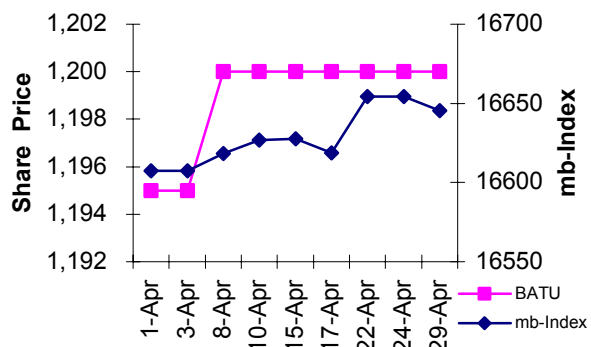
[d-gathaara@mbea.net](mailto:d-gathaara@mbea.net) or  
[a-matovu@mbea.net](mailto:a-matovu@mbea.net)

### "Remember, Share Prices may go up or down"

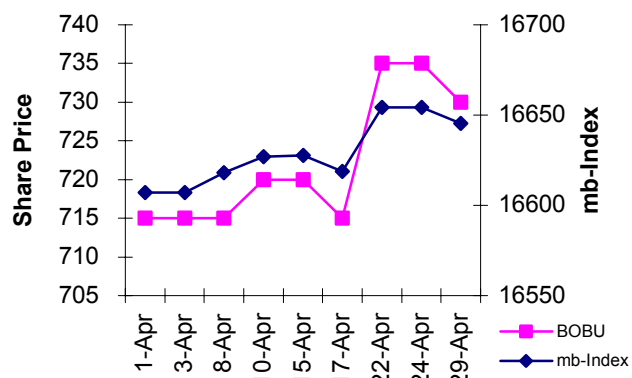
Any recommendation in this Market Report may not be suitable for all investors and the opinions expressed herein are subject to change without notice. We may from time to time have a long or short position in and buy or sell some of the securities referred to herein. The information and statistics in this Market Report are based upon sources we believe to be reliable, but have not been independently verified by this. The information, comments, and opinions, if any, are not intended to be, and should not be relied upon as complete.  
Pan Africa House, 4<sup>th</sup> Floor, 3 Kimathi Avenue, P.O. Box 24613, Kampala, Uganda  
Tel: +256 (0) 41 341448/231960 Fax: +256 (0) 41 342045 E-mail: [info@mbea.net](mailto:info@mbea.net) Web Site: [www.mbea.net](http://www.mbea.net)

Company share prices compared with the mb-Index show over, under or par performance as against the mb-Index.

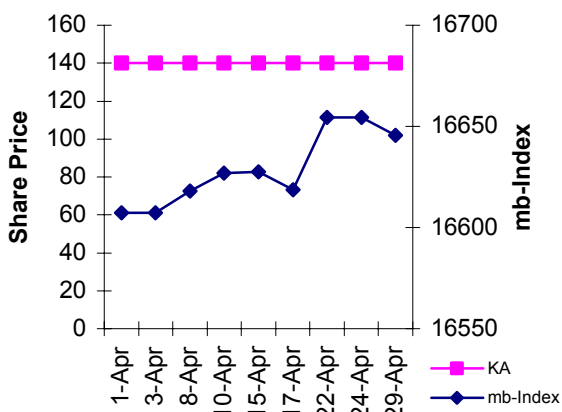
**BATU Share Price vs mb-Index**



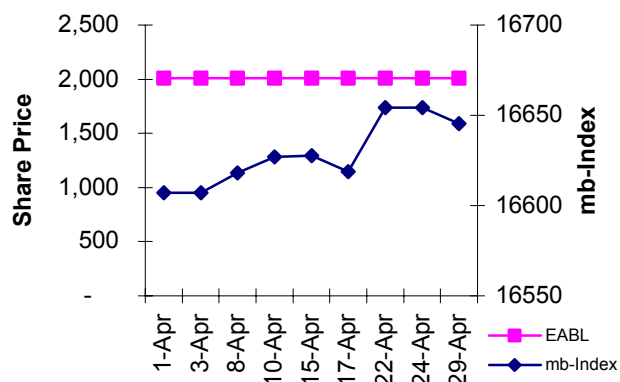
**BOBU Share Price vs mb-Index**



**KA Share Price vs mb-Index**



**EABL Share Price vs mb-Index**



**UCL Share Price vs mb-Index**

